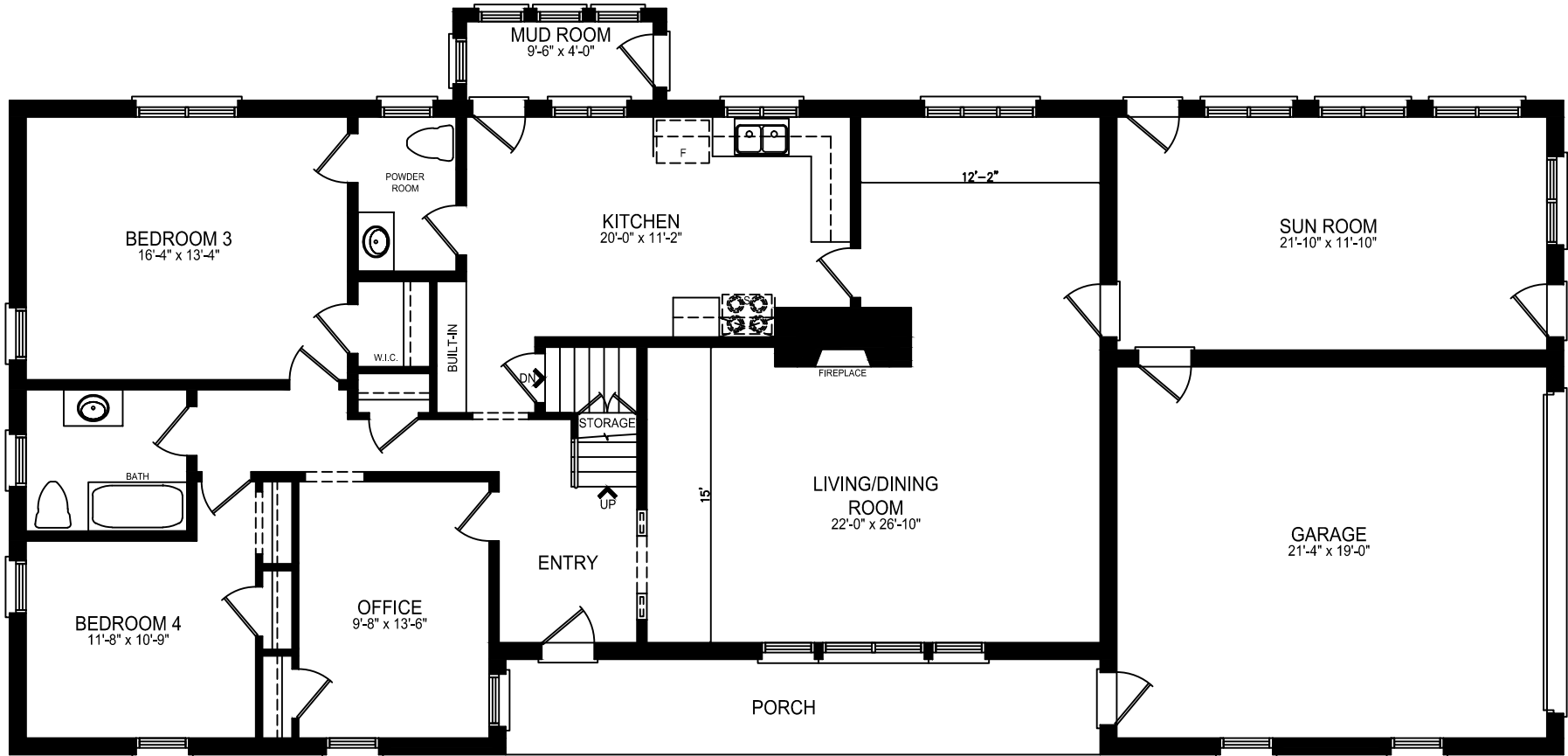


# 13482 Woodbine Avenue

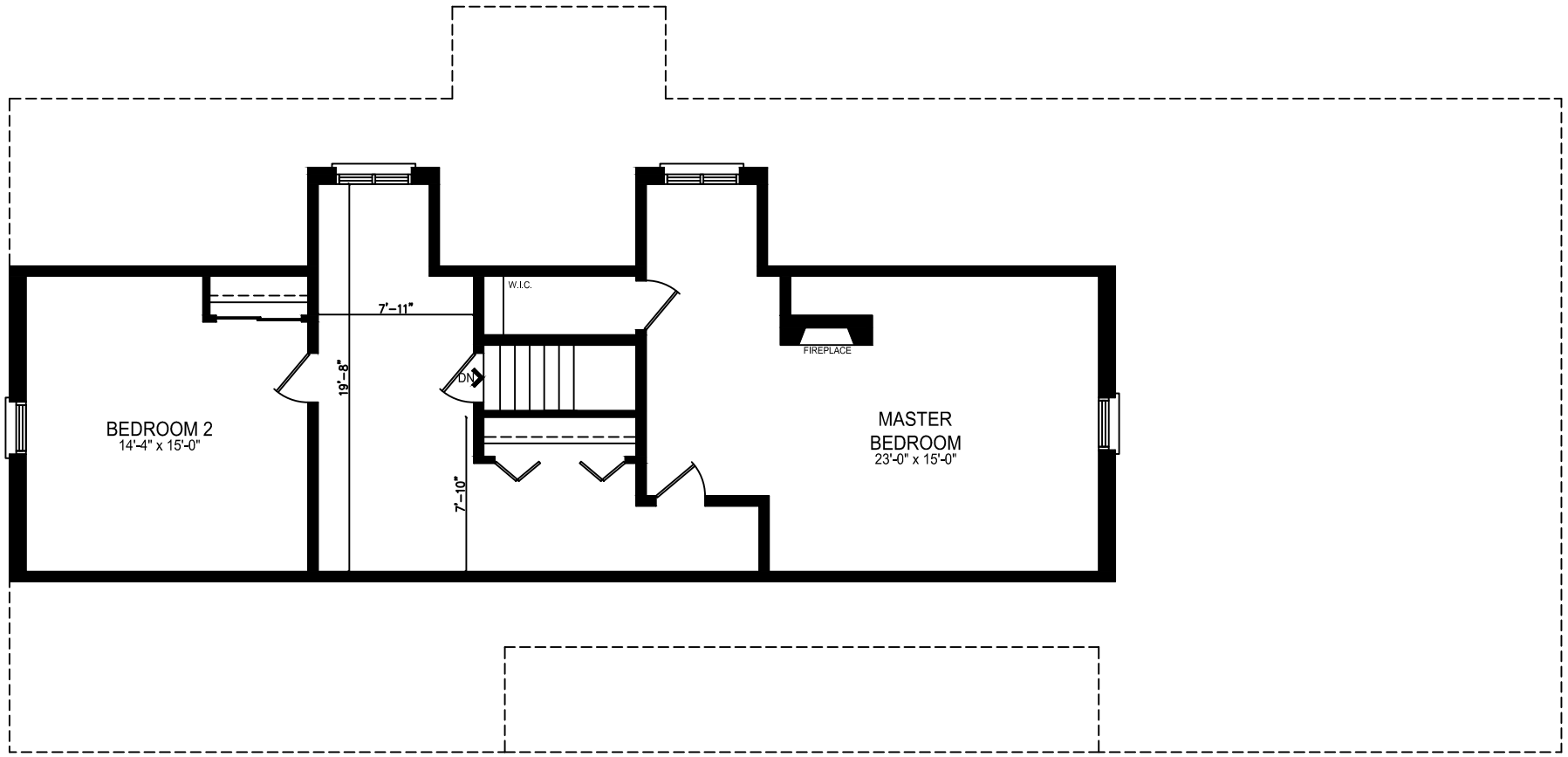
Approx. 3,635 sq.ft.  
Including Lower Level Approx. 5,348 sq.ft.



GROUND FLOOR PLAN  
APPROX. 2,670 SQ.FT.

# 13482 Woodbine Avenue

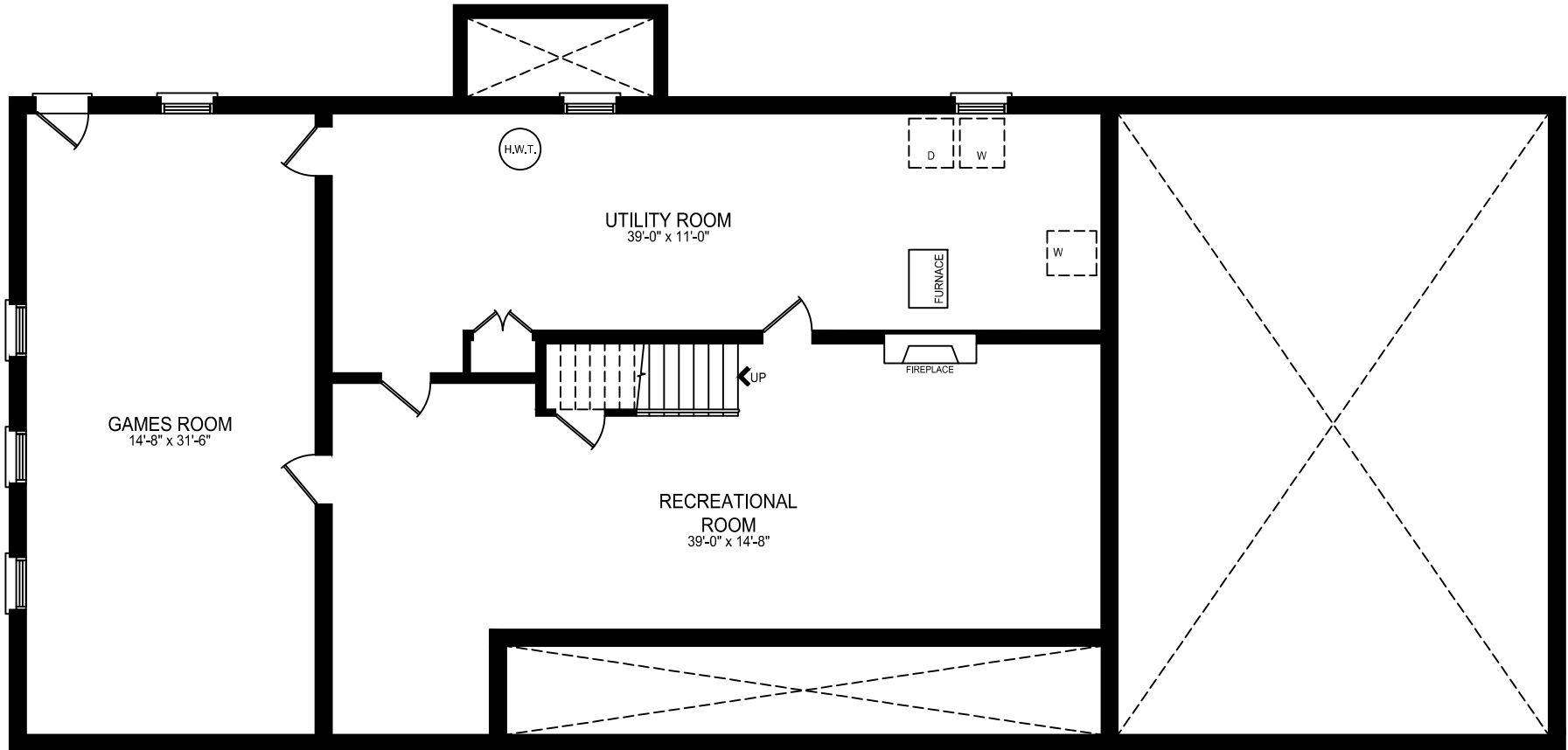
Approx. 3,635 sq.ft.  
Including Lower Level Approx. 5,348 sq.ft.



SECOND FLOOR PLAN  
APPROX. 965 SQ.FT.

# 13482 Woodbine Avenue

Approx. 3,635 sq.ft.  
Including Lower Level Approx. 5,348 sq.ft.



LOWER LEVEL FLOOR PLAN  
APPROX. 1,713 SQ.FT.

13482 Woodbine Avenue

NOVEMBER/12/2015

**LOWER LEVEL FLOOR**

RECREATIONAL ROOM	39'-0" x 14'-8"	11.88m x 4.47m
GAMES ROOM	14'-8" x 31'-6"	4.47m x 9.60m
UTILITY ROOM	39'-0" x 11'-0"	11.88m x 3.35m

**GROUND FLOOR**

KITCHEN	20'-0" x 11'-2"	6.09m x 3.40m
LIVING/DINING ROOM	22'-0" x 26'-10"	6.70m x 8.17m
OFFICE	9'-8" x 13'-6"	2.94m x 4.11m
BEDROOM 3	16'-4" x 13'-4"	4.97m x 4.06m
BEDROOM 4	11'-8" x 10'-9"	3.55m x 3.27m
MUD ROOM	9'-6" x 4'-0"	2.89m x 1.21m
SUN ROOM	21'-10" x 11'-10"	6.65m x 3.60m

**SECOND FLOOR**

MASTER BEDROOM	23'-0" x 15'-0"	7.01m x 4.57m
BEDROOM 2	14'-4" x 15'-0"	4.36m x 4.57m