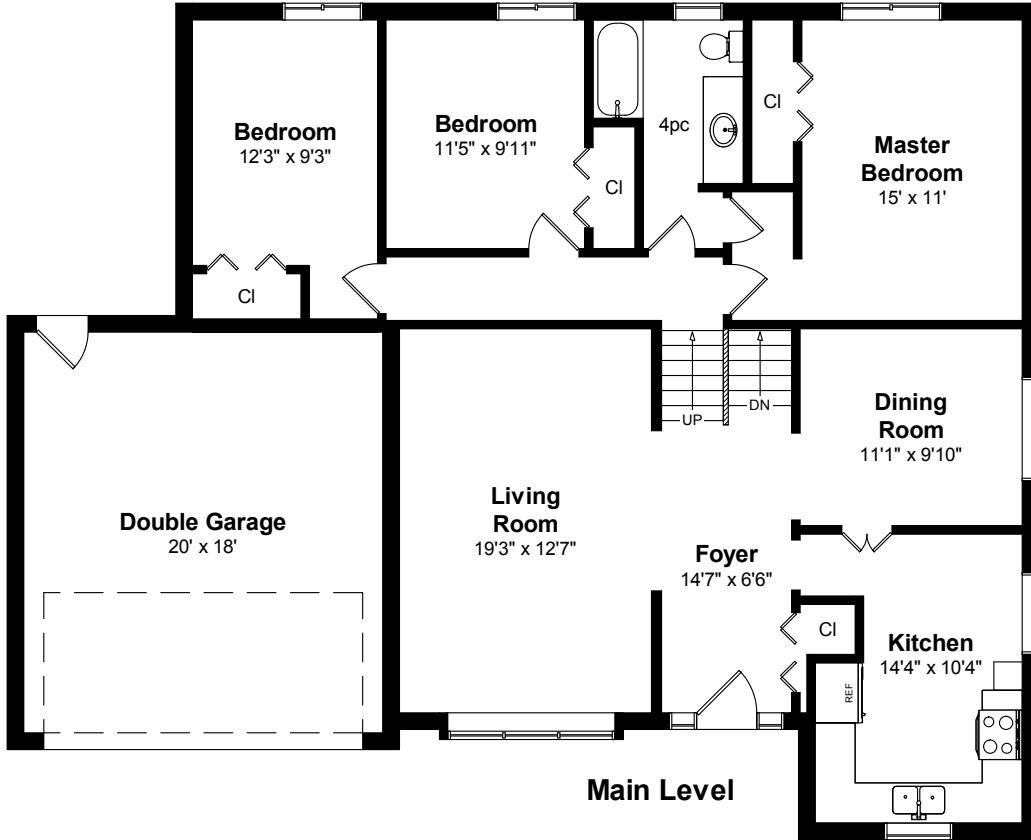


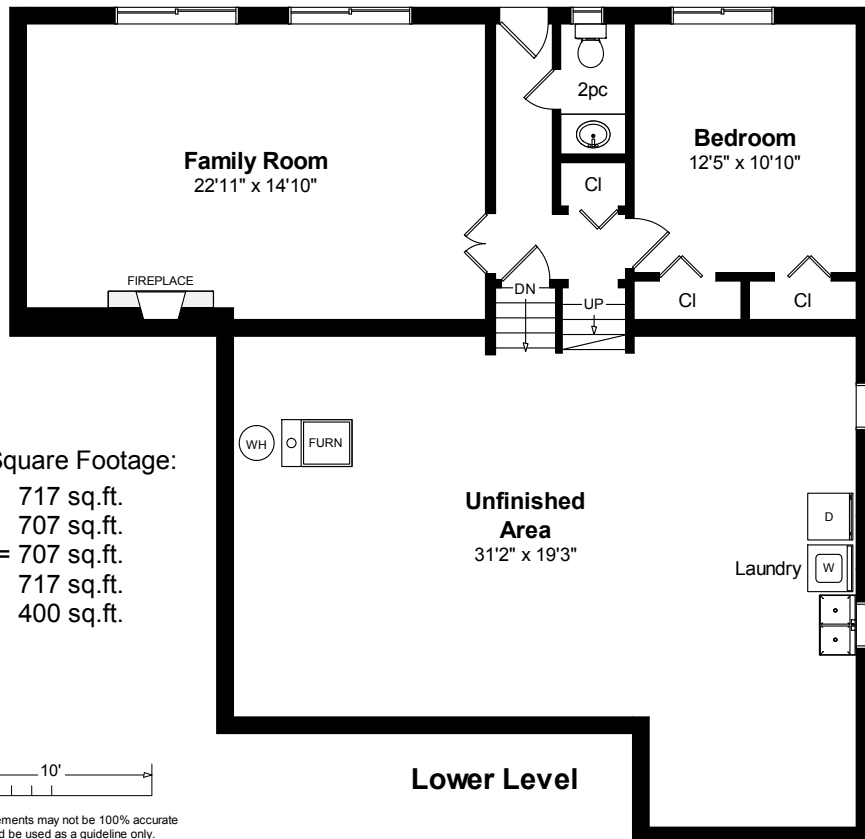
~ Floor Plan ~
52 Silverthorne Bush Drive

Upper Level



Main Level

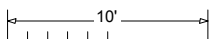
Ground Level



Lower Level

Approximate Square Footage:

- Main Level = 717 sq.ft.
- Upper Level = 707 sq.ft.
- Ground Level = 707 sq.ft.
- Lower Level = 717 sq.ft.
- Garage = 400 sq.ft.



Note: Measurements may not be 100% accurate and should be used as a guideline only.
 October - 2020