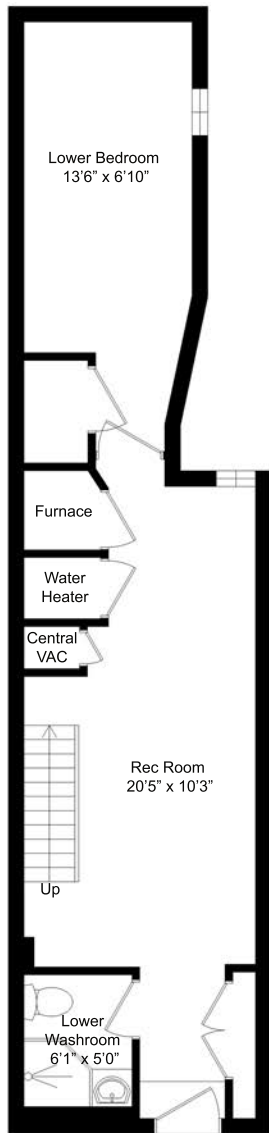
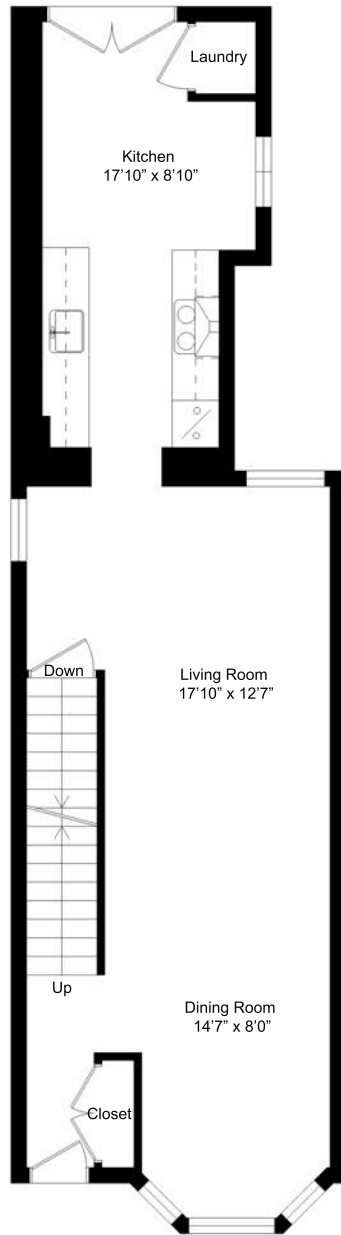


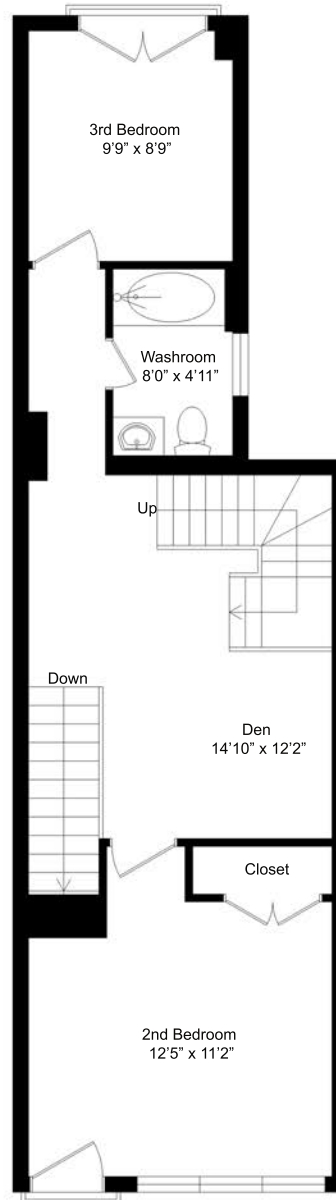
53 BOSWELL AVENUE, TORONTO



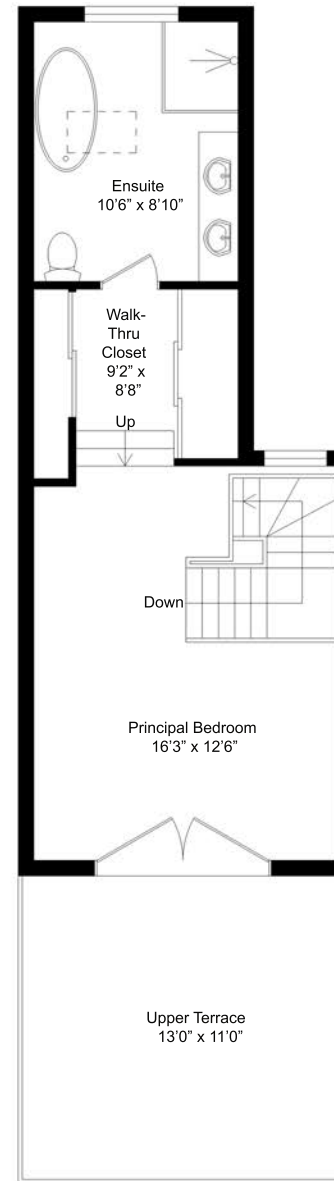
LOWER LEVEL



MAIN LEVEL



BEDROOM LEVEL



UPPER LEVEL

LOWER LEVEL

- Rec Room 20'5" x 10'3" (6.22m x 3.12m)
- Lower Bedroom 13'6" x 6'10" (4.11m x 2.80m)
- Lower Washroom 6'1" x 5'0" (1.85m x 1.52m)

MAIN LEVEL

- Living Room 17'10" x 12'7" (5.44m x 3.84m)
- Dining Room 14'7" x 8'0" (4.45m x 2.44m)
- Kitchen 17'10" x 8'10" (5.44m x 2.70m)

BEDROOM LEVEL

- Den 14'10" x 12'2" (4.52m x 3.71m)
- 2nd Bedroom 12'5" x 11'2" (3.79m x 3.40m)
- 3rd Bedroom 9'9" x 8'9" (2.97m x 2.67m)
- Washroom 8'0" x 4'11" (2.44m x 1.50m)

UPPER LEVEL

- Principal Bedroom 16'3" x 12'6" (4.95m x 3.81m)
- Walk-Thru Closet 9'2" x 8'8" (2.80m x 2.64m)
- Ensuite 10'6" x 8'10" (3.20m x 2.7m)
- Upper Terrace 13' X 11' (3.96m x 3.35m)

This floorplan is for general illustrative visual reference and layout guidelines only. All actual room measurements and square footage is the responsibility of the buyer and buyer's agent to verify.

Internal area measurements are based on Gross Internal Area which means floor area without internal walls.