

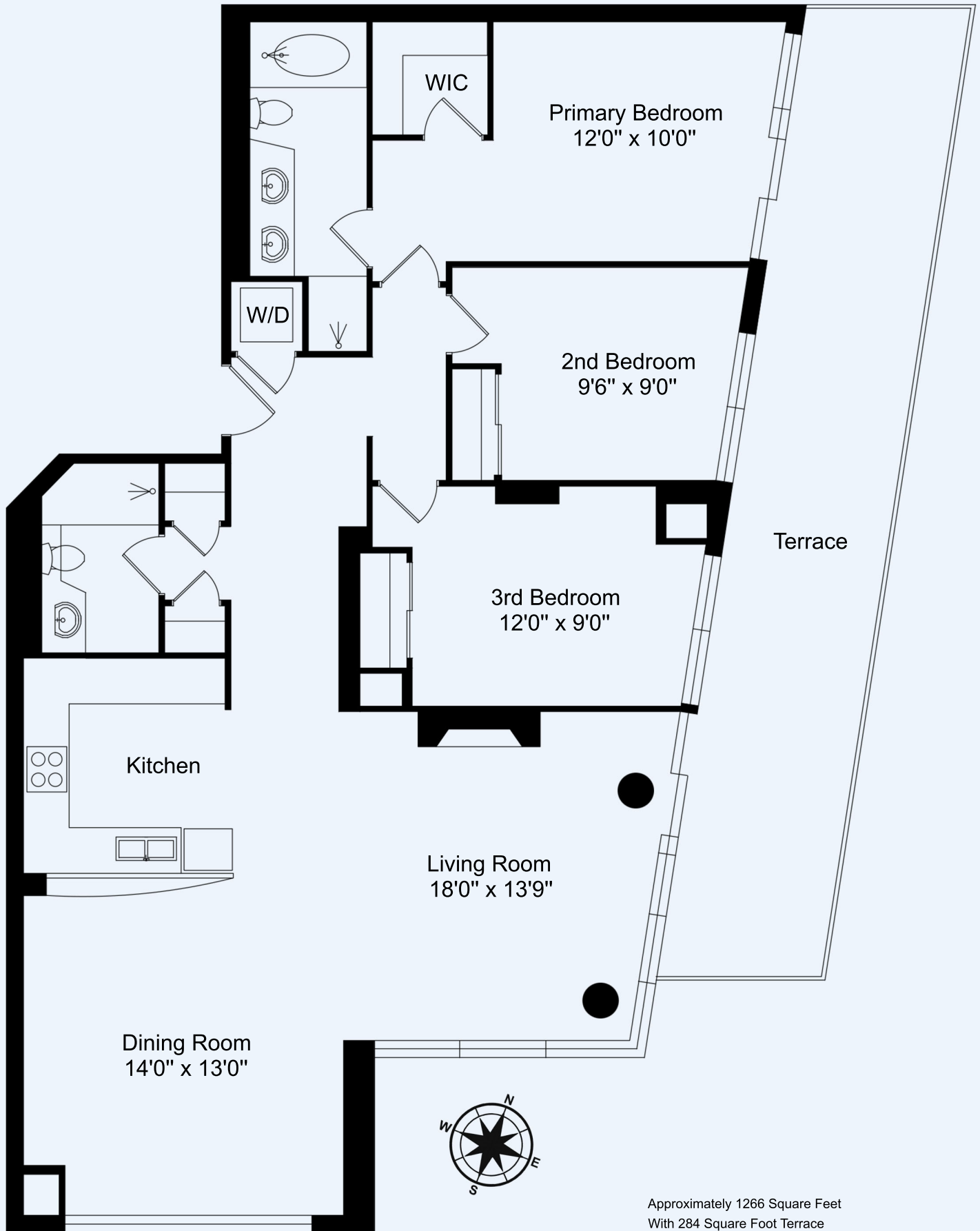
# 4006 - 16 YONGE STREET, TORONTO

This floorplan is for general illustrative visual reference and layout guidelines only. All actual room measurements and square footage is the responsibility of the buyer and buyer's agent to verify.

Internal area measurements are based on Gross Internal Area which means floor area measurements taken within the boundaries of the interior walls.

Square footages indicated are general approximations derived from longest interior floor lengths and NOT the MPAC assessed square footage value taken from the outside exterior walls of the building envelope.

This is not a legal document and should not be treated as such.



Approximately 1266 Square Feet  
With 284 Square Foot Terrace