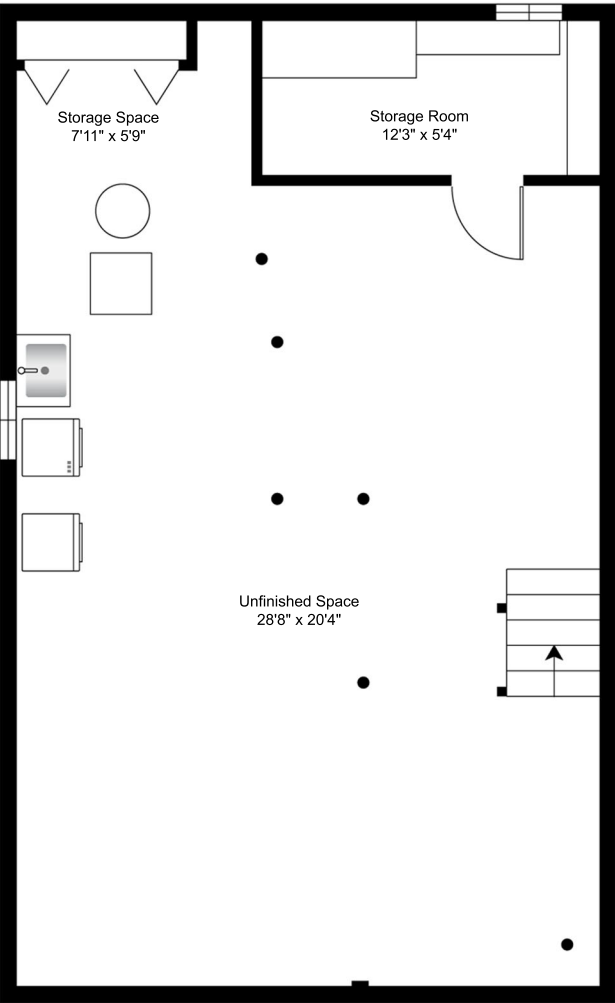
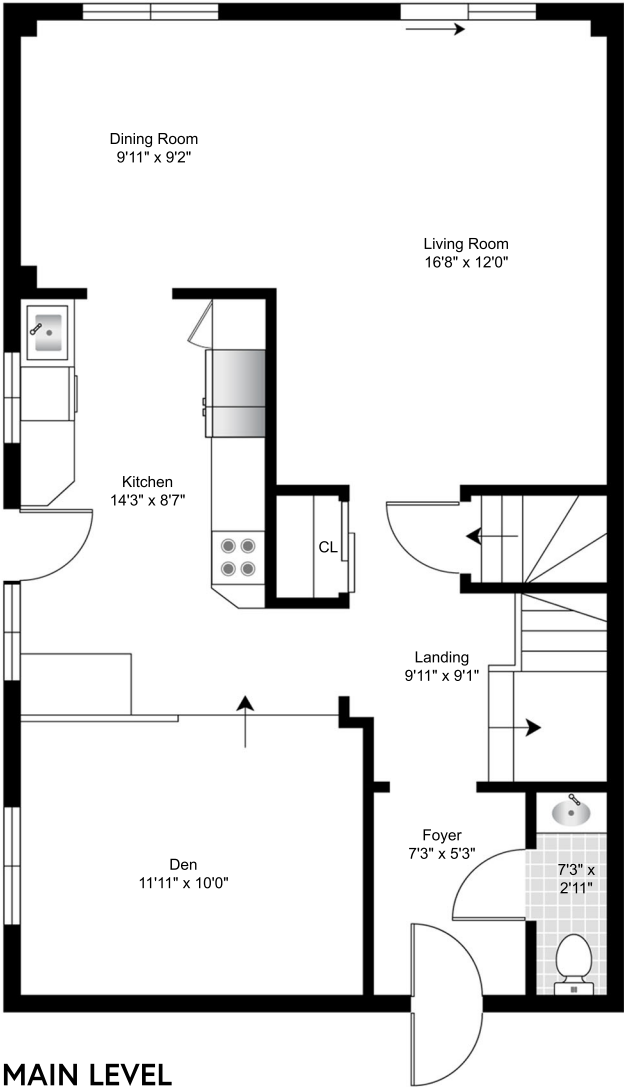


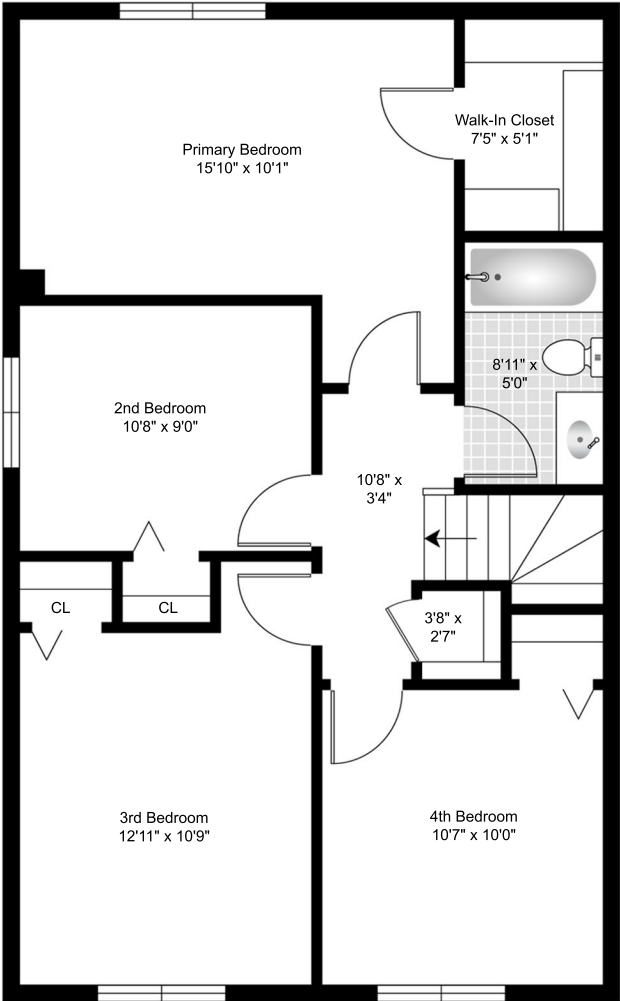
57 Donnamora Crescent, Markham  
~1600 Sqr.Ft. Above Grade



**BASEMENT**  
~740 Sqr.Ft.  
7'4" Ceiling Height



**MAIN LEVEL**  
~800 Sqr.Ft.  
8'0" Ceiling Height



**UPPER LEVEL**  
~800 Sqr.Ft.  
7'7" Ceiling Height

This floorplan is for broadly general illustrative visual reference and layout guidelines only. It may be subject to minor drawing errors as a result of the accuracy of on-site scanning. All actual layout and measurements are the responsibility of the buyer and buyer's agent to verify.

Internal area measurements are taken within the boundaries of the longest interior wall lengths.

Square footages indicated are general approximations derived from a combination of longest interior floor lengths and not from the MPAC assessed square footage values.

They do not include square footages of garages, decks or patios.

This is not represented or endorsed as a legally binding document and should not be treated as such.